

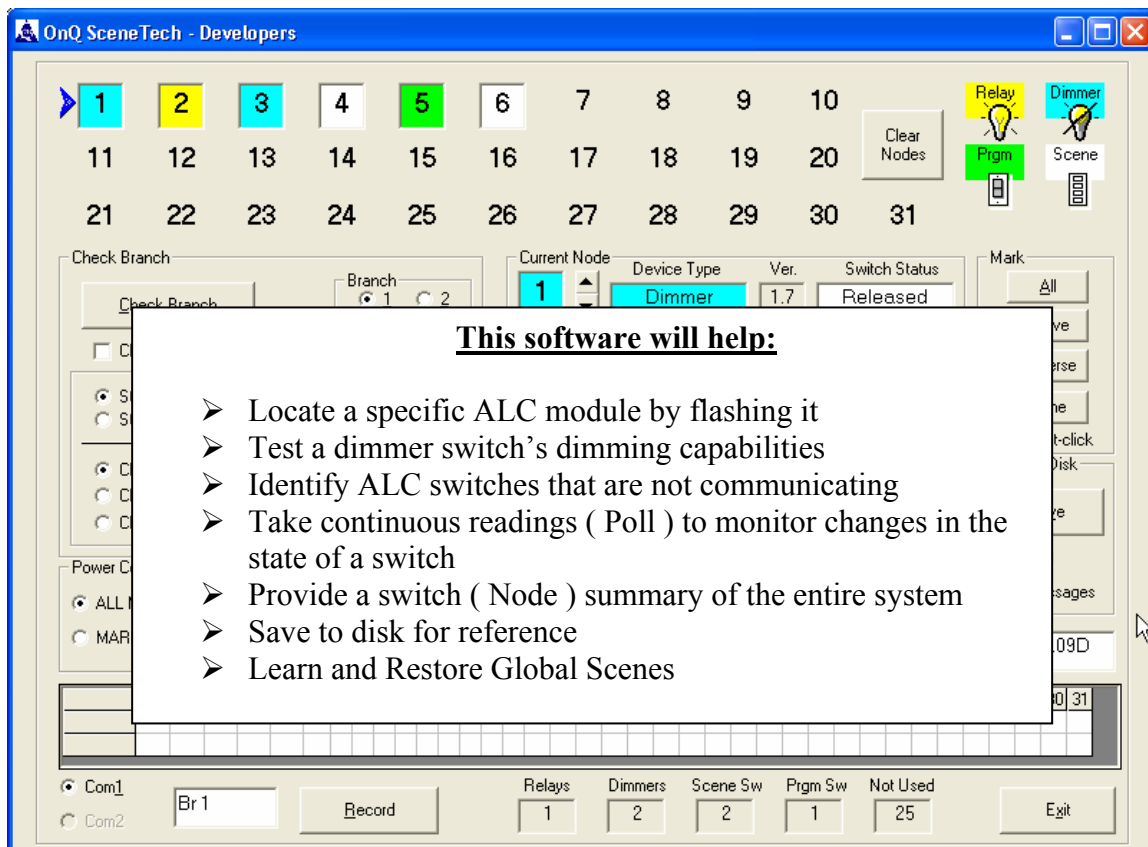
ALC SceneTech Software

Installation Manual

1.0 Introduction

This document describes installation of the ALC SceneTech software (both Installer's version and Developer's version) for the Microsoft Windows operating system. This software will operate under Windows 9x, ME, NT, 2000, and XP.

This software along with the ALC Scene Learning Interface (P/N 364614-01 / 02), allows an installer or developer to test and troubleshoot ALC light switches and entire ALC lighting systems. This program allows you to test an entire branch or an individual switch.

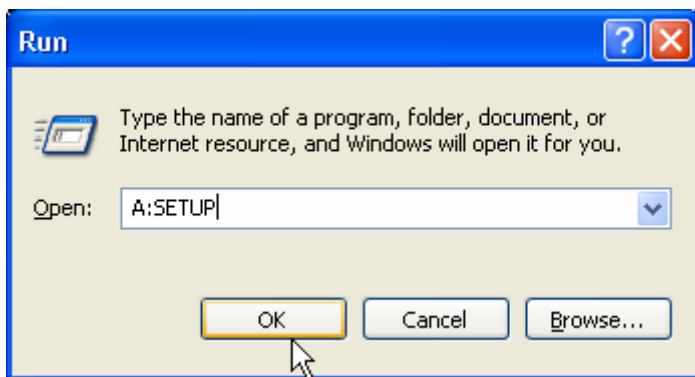


2.0 INSTALLATION OF SOFTWARE

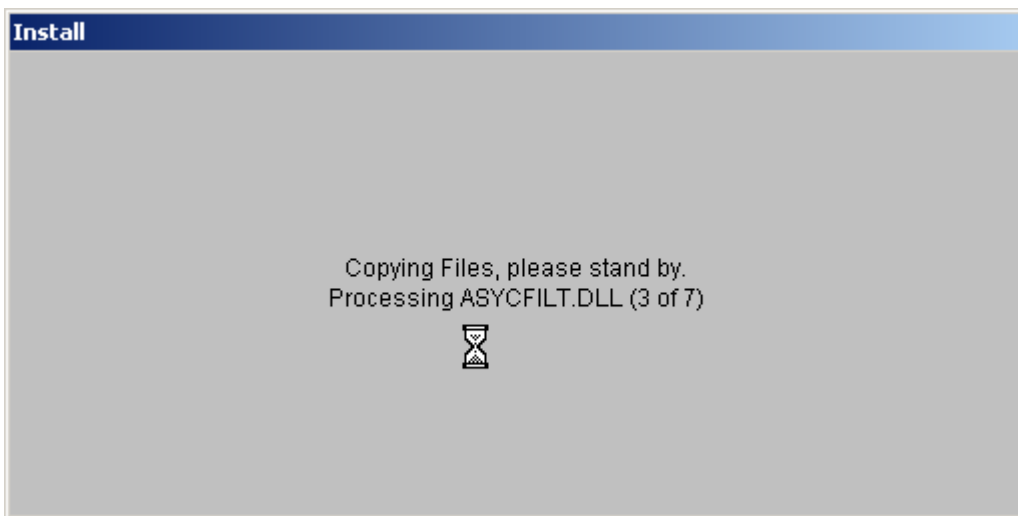
The SceneTech software is shipped on two 3 ½ inch floppy disks. During this installation, the Setup.exe file will be executed and a new folder will be created.

To install the software,

1. Put Disk 1 of 2 into the floppy drive A:.
2. Click the Start button at the lower left corner of the Windows screen.
3. Click the "Run..." menu item.
4. In the Run window that appears, type **A:Setup** in the Open: box then click **OK**.



Setup will display the following screen and begin copying files from the floppy disk.

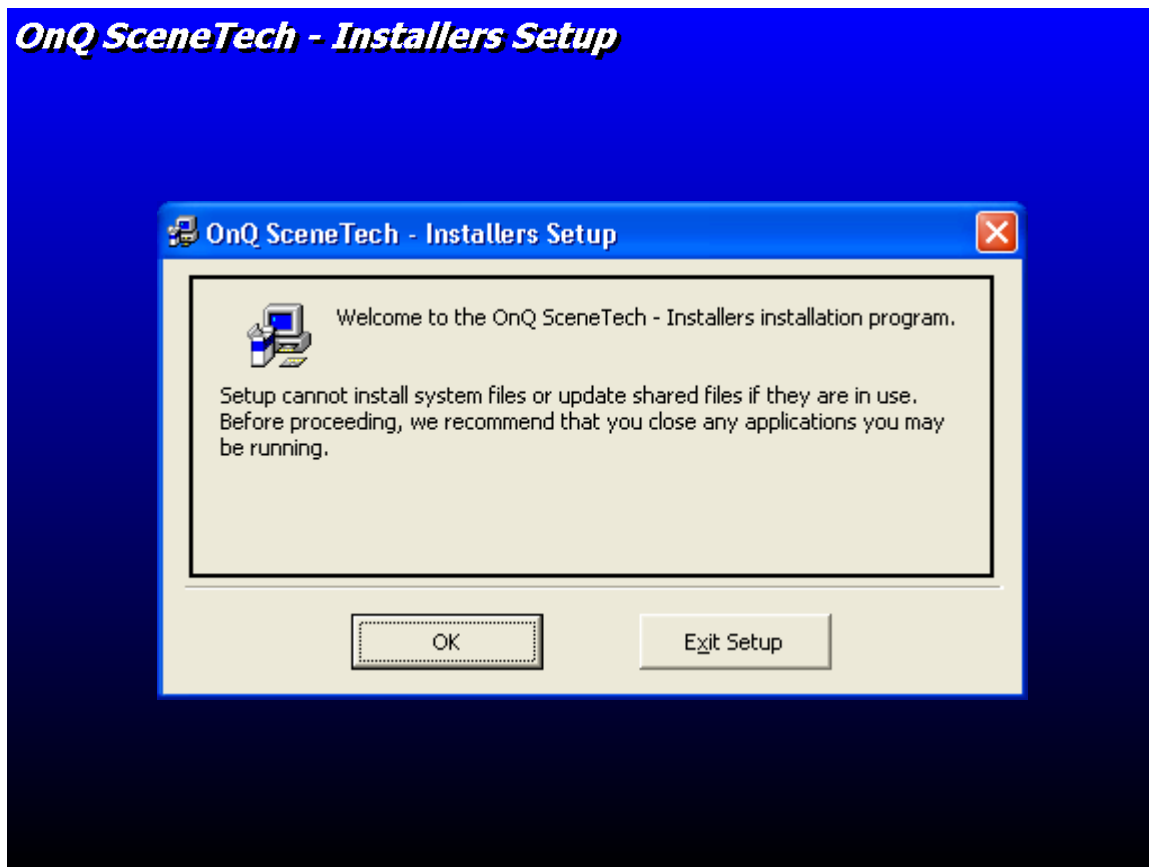


When prompted to Insert Disk 2,

5. Remove the first disk, insert Disk 2 of 2, and click **OK**

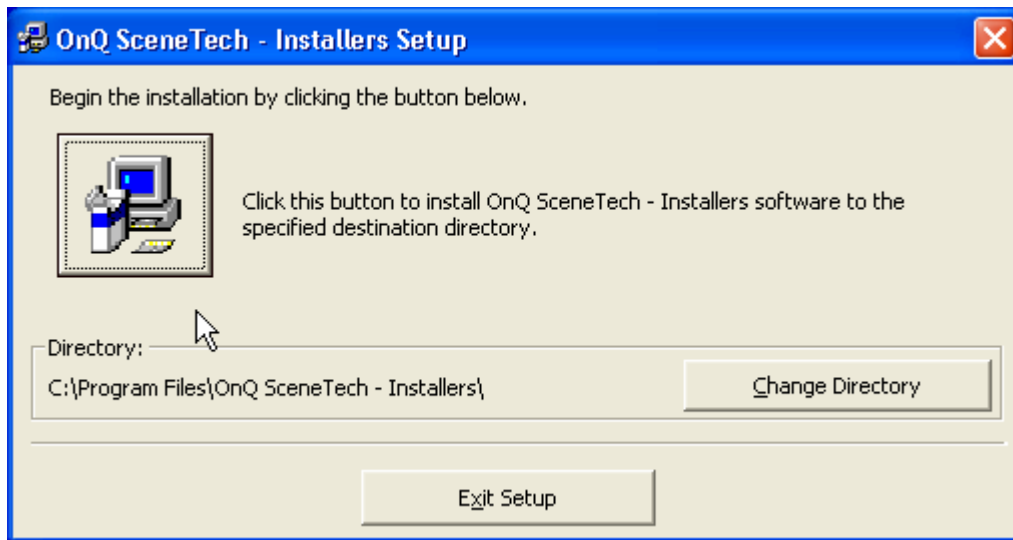
After more files are copied, the following screen is displayed:

(Note: If you are installing the Developer's Version of SceneTech, you will see "OnQ SceneTech - Developers Setup" on this and other screens.)



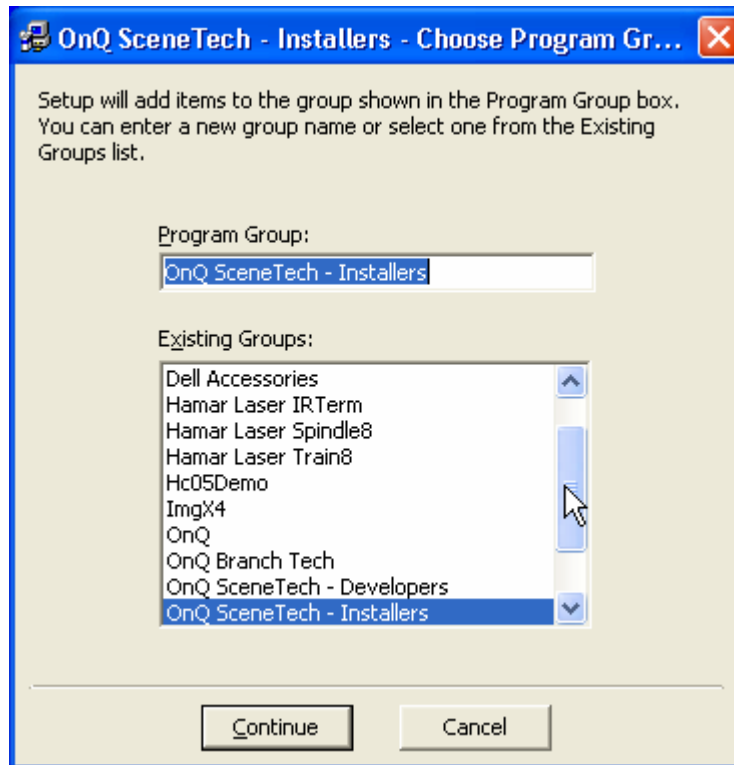
6. Click **OK** to continue.

After reading more files, this screen will be displayed:



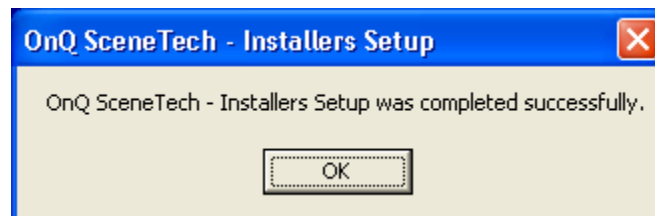
7. Click the large square button to continue the installation.

After a few moments, this screen is displayed:



8. Click the **Continue** button.

When the installation is complete, this screen will be displayed:



9. Click **OK**.

To start the program,

10. Click the Windows Start button in the lower left corner of the screen and select **Programs** (or **All Programs**).

11. In the list of Programs, click the OnQ SceneTech - Installers folder, and then click the OnQ SceneTech - Installers menu item.

To create a shortcut on your Windows desktop to make it easier to start SceneTech, close or minimize any programs that are running, then

12. Right-click on an empty area of the Windows screen. Select **New** on the menu that appears, then select **Shortcut**.

13. Click the Browse button to locate the folder containing the OnQ SceneTech program, typically "My Computer, Drive C:, Program Files, OnQ SceneTech - Installers" then select the program file "STechI.exe" (or "STechD.exe for the Developers Version).

14. You may rename the shortcut to something like "SceneTech" and click **OK**.

There will now be a SceneTech icon on your desktop. Double-click it to start the program.

Note: Later versions of Windows will let you right-drag the menu item in the Start/Programs menu to your desktop. When you release the right mouse button, a menu will allow you to create a shortcut on your desktop by simply selecting 'Copy Here'.