

OnQ AnyPort® RCA-“F” Insert



OnQ Technologies, Inc.
P.O. Box 60907
Harrisburg, PA 17106-0907
www.onqtech.com

IS-0112 Rev. O
Ref. P/N 100225-12



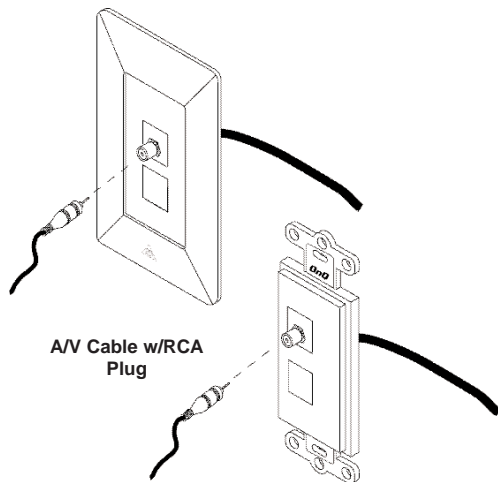
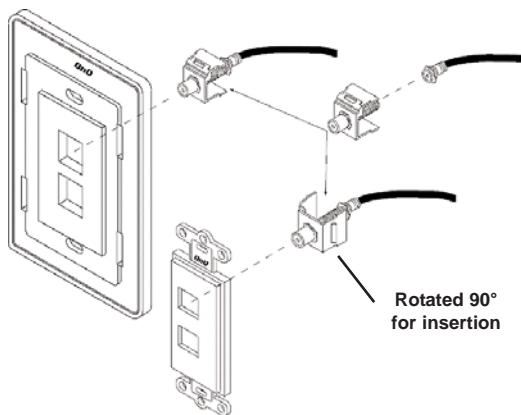
COMMUNICATION
CIRCUIT
ACCESSORY 73HM

OnQ AnyPort® RCA-"F" Inserts provide connectivity to audio and video services.

INSTALLATION

1. Run cables to the location of the outlet. Attach "F" connector to the cable as described in the instructions that accompany that item.
2. Attach the RCA- "F" connector insert to the cable as follows:
Press the cable "F" connector (male) to the RCA-"F" connector insert (female), then rotate in a clockwise direction until the connectors are fully seated.
3. Insert RCA-"F" connector insert into an AnyPort designer outlet, decorator outlet or Hide-A-Port outlet.

NOTE: Inserts used in the AnyPort decorator outlets must be rotated 90° for proper insertion.



A/V Cable w/RCA Plug

RCA-"F" Insert as shown in AnyPort designer outlet and decorator outlet

4. Simply "plug" the banana plug connector into the front of the RCA-"F" insert connector.