

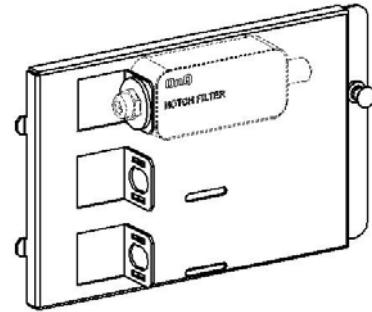
1. Introduction:

The RF Coax Conditioning Module (see **Figure 1**) is a plate that accepts up to three RF signal-conditioning units, such as notch filters, low pass filters, RF Coax Surge Protector etc, in any combination. This module can be mounted into any OnQ standard service center enclosure.

2. Description:

The RF Surge Module consists of a black powder coated steel base plate with integral mounting tabs for mounting up to three RF units. A hardware kit of 3 hex nuts and washers is included. The module is a half-width module, 4"H x 6.42"W, which is mounted with the standard OnQ Tab and plunger arrangement.

Figure 1



3. Installation:

A. Mounting the module in enclosure (see **Figure 2)**

1. Align tabs on module with slots on rail of enclosure.
2. Insert tabs by angling module away from the back of the enclosure and sliding forward.
3. Rotate the module and insert fasteners on module into corresponding holes on rail of enclosure. (Plunger must be in the pulled out position for fastener to engage hole.)
4. Push plunger in to lock module in place. Pull on module to assure module is locked properly in place.

B. Attaching RF signal conditioning units to the module.

1. Position the RF signal conditioning unit on the module. Plan the orientation to assure proper signal direction.

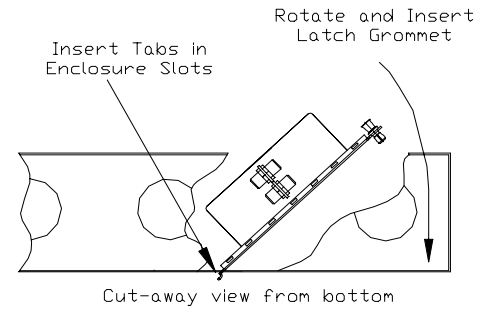
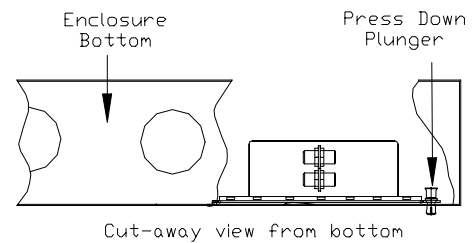


Figure 2



Note: Conditioning units are used in series. The output of one unit may be the input of the next. The last unit will typically feed the distribution system.

2. Secure with washer and jam nut from hardware kit.
3. Attach feed cable and jumpers to the units to complete installation.

Note: Recommended location for RF Surge Module is in close proximity to the video distribution modules. However, modules may be mounted in any available space.

Note: Plan installation such that cable bends are not less than 2 inch radii for RG6 Quad Shield cable. We recommend the use of Mini-Coax cable for jumpers between modules.