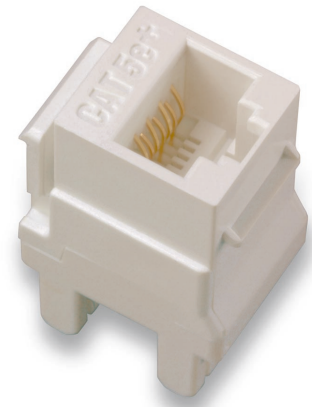
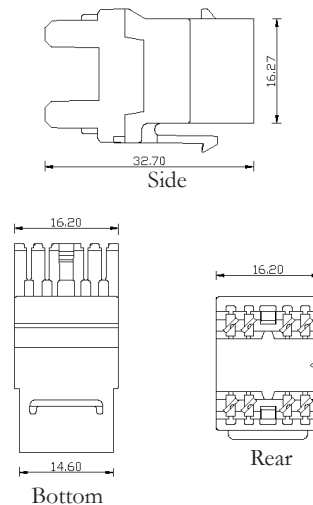


OVERVIEW

The Greyfox Home Systems line of Category 5e keystone style jacks provide optimum performance for all voice/data applications. The jacks accept either RJ-45 or RJ-11 plugs for voice applications. For data applications the jacks can support standard 100 Mbps Ethernet or Gigabit Ethernet (Gigabit network hardware required).

The jacks are available in Ivory, Light Almond, White, Blue, or Grey. This variety of colors allows you to uniquely identify jacks based on application.



FEATURES & BENEFITS

- Universal design supports either T568A or T568B termination standard
- 180° punchdown for easy termination
- Easy to read color coded wiring label
- Rear mount, snap-in keystone design
- Removes easily for quick re-termination
- Perfectly color matched with Greyfox wall plates
- Available colors: Ivory, Light Almond, White, Blue, and Grey

SPECIFICATIONS

Dimensions:	0.64" (H) 0.63" (W) X 1.29" (D) 16.27mm (H) X 16.20mm (W) X 32.70mm (D)
Housing:	High-impact, Flame-retardant plastic, UL 94V-0
Wire contacts:	High quality phosphor bronze, plated with 50 micro-inches of 24K gold over 100 micro-inches of nickel
IDC:	110 style solder-plated phosphor bronze, accepts 22 - 26 wire gauge
Mechanical properties:	30 lbs retention force between jack and plug - minimum life of 750 insertion/extraction cycles

To complete your installation you may also need:

- Keystone style DataCom wallplate or Decorator Frame
- 110 IDC Punchdown tool